



5711 Clarewood, Suite B
Houston, TX 77081
Phone: 713-667-4402
Fax: 713-669-8618
www.SMPtools.com
sales@SMPtools.com

Specialty Maintenance Products

established 1996

Product Catalog 2014

Safer Tools / Safer Workplace

SAME DAY SHIPPING on most items till 5:30 pm Central Standard Time



The POP-IT Tool 95-525

The *POP-IT* flange spreading or equipment lifting tool is the most versatile tool of its kind on the market!

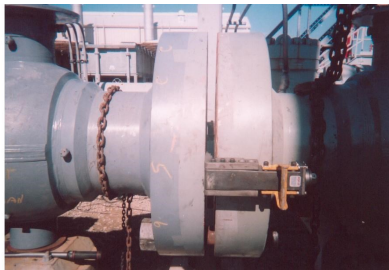


- Takes the place of the hammer and wedge.
- Can spread or lift 5 tons to 5.25" with 120 pounds of force
- Precision adjustment
- Compact & Portable
- Holds setting without drift
- Lightweight
- .07" entrance for tight spots
- Reduces risk of injury



The POP-IT HD Tool HD-0535

The POP-IT HD is designed for spreading large or rigid flanges and lifting heavy equipment.



- Can spread or lift 30,000 pounds up to 5.5 inches
- Can spread or lift 20,000 pounds up to 8.5 inches with the toes reset



The POP-IT Tool 95-525

95-525



95-525 Kit



95-525 Pop-It Tool Kit
 Kit comes with:
 2 each 95-525,
 2 each safety chocks
 1 Pelican case

The POP-IT HD Tool HD-0535

HD-0535



HD-0535 Kit



HD-0535 Pop-it Tool Kit
 Kit comes with:
 1 each HD Tool
 1 each safety chock
 1 each Pelican case

HAMMERTIGHT Slugging Wrench Retainers

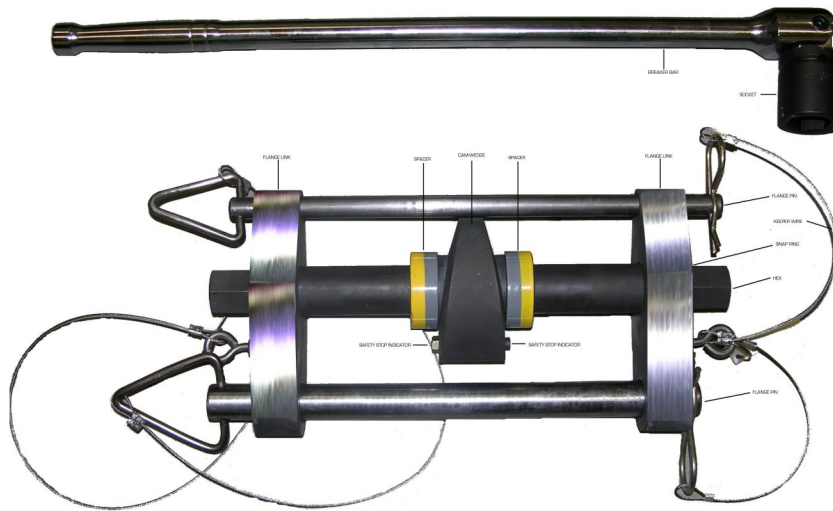
The HammerTight wrench retainer is a hands-free device that holds a striking wrench, back up wrench or a low-clearance torque wrench in place to prevent hand injuries. The spring loaded retaining plate allows the hammer wrench to be indexed without having to unscrew the retainer. With the striking wrench or box-end wrench in place simply thread the Strike-Right wrench retainer over the stud and you are ready to go.



Available in **Steel** or **Aluminum**

| <u>Part Number</u> | <u>Stud Size</u> | <u>Nut Size</u> |
|--------------------|----------------------|--------------------------|
| HS-34 | 3/4" | 1-1/4" |
| HS-78 | 7/8" | 1-7/16" |
| HS-1 | 1" | 1-5/8" |
| HS-118 | 1-1/8" | 1-13/16" |
| HS-114 | 1-1/4" | 2" |
| HS-138 | 1-3/8" | 2-13/16" |
| HS-112 | 1-1/2" | 2-3/8" |
| HS-158 | 1-5/8" | 2-9/16" |
| HS-138 | 1-3/4" | 2-3/4" |
| HS-178 | 1-7/8" | 2-15/16" |
| HS-10 Set | 3/4" - 1-7/8" | 1-1/4" - 2-15/16" |

AMS Flange Boss Flange Spreader



Pipe Size Ranges For All Tools: .5" to 24" Diameter

Model # FBX 150-300 (for 150 & 300 Series Flanges)*

Model # FBX 400-600 (for 400 & 600 Series Flanges)**

Model #FBX 900-2500 (for 900, 1500, & 2500 Series Flanges)**

*7/8" opening

** 1- 3/4" opening

Includes carrying case, ratchet & socket

SMP Hydraulic Flange Spreaders

- 10,000 psi integral hydraulic pump generates **14.5 tons** of spreading force
- Requires a gap of only 6mm
- Deep 15mm secure hold on first step
- Automatic mechanical retraction

Kit comes with:

1X SW14.5TI Wedgehead

1X 10,000 psi 10T Integral Hydraulic Pump/Cylinder

1 each Safety Block, Carry Case, Carry Strap and Instruction Manual

SMP-SW14.5TI



SMP-SW15TE Maxi Kit

- Generates smooth spreading force of **15.5 Tons**
- Requires only a 6mm gap
- Automatic mechanical retraction
- Interlocking first step with deep 15mm secure hold

Kit comes with:

2X SW15TE Wedgeheads

2X 10,000 psi 10T Hydraulic Hoses, 2m each

2X 10,000 psi 10T Hydraulic Cylinders

1X 10,000 psi HP350D Sealed Hand Pump with Gauges

2X Safety Blocks

1 each Carrying Case and Instruction Manual

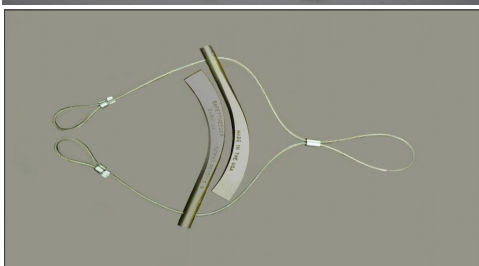


SMP SafetyWedge

Are your wedges safe?



SAFETYWEDGE™ is designed to reduce the possibility of worker injury. These are the only patent pending wedges with a safety strap. They are available in brass, straight steel and banana wedge types. The brass SAFETYWEDGE™ is restrained, non-flying, non-magnetic, non-sparking, non-corrosive, shock-resistant brass wedge designed to be the safest wedge ever made. No other brass wedge offers these features.



| <u>Model</u> | <u>Description</u> | <u>Length</u> | <u>Thickness</u> | <u>Width</u> |
|--------------|------------------------------|---------------|------------------|--------------|
| SW-1A | Brass flange wedge | 6" | 0.5" | 1" |
| SW-2A | Brass flange wedge | 8" | 3/4" | 1.5" |
| SW-3A | Brass flange wedge | 8" | 1.5" | 1.5" |
| SWST-1A | Straight steel flange wedge | 10.5" | 7/8" | 7/8" |
| SWBN-1A | Banana steel wedge | 11" | 7/8" | 7/8" |
| SWBW-1A | Brass banana wedge | 13" | 3/4" | 1.5" |
| SW-1A-LAN | Spare brass lanyard | 48" | 1/8" | 1/8" |
| SW-2A-LAN | Spare brass lanyard | 60" | 3/16" | 3/16" |
| SW-3A-LAN | Spare brass lanyard | 60" | 3/16" | 3/16" |
| SWST-1A-LAN | Spare straight steel lanyard | 60" | 3/16" | 3/16" |
| SWBN-1A-LAN | Spare banana lanyard | 60" | 3/16" | 3/16" |

VALVE-OUT Valve Removal & Flange Maintenance Tool



Valve In



Valve-Out

This is a bolt-hole specific tool. When you turn the jack-bolt, the plates cantilever back, binding the bolt-hole pins in the bolt-holes, thus pulling the outside flanges back, allowing you to remove the valve safely.

Be Safe! With the Valve-Out Tool you can eliminate the need for come-alongs, track-hoes, wire rope, chains, hammers and wedges.

Safe and easy removal of:

Control Valves

By-Pass Valves

Expansion Joints

Spools

Rupture Disks

Regulators

Orifice Plates

Meters

VALVE-OUT Pricing

SMP-VOC 1 Kit

VOC-1 Kit has 3/4", 7/8" and 1" bolt hole pins that can handle flange sizes ranging from:

2" thru 12" 150 series flanges

1-1/2" thru 8" 300 series flanges

1-1/2" 400 thru 6" 400 series flanges

2" thru 4" 600 Series flanges

2" thru 3" 900 series flanges

2" 1500 series flanges

Kit Includes 2 ea. Pelican Hard Shelled Cases; FOB: Houston, Texas

SMP-VOC 2 Kit

VOC-2 Kit has 1-1/8", 1-1/4" and 1-3/8" bolt hole pins that can handle flange sizes from:

14" thru 26" 150 series flanges

10" thru 20" 300 series flanges

8" thru 14" 400 series flanges

6" thru 12" 600 series flanges

1-1/2" thru 6" 900 series flanges

1-1/2" thru 3" 1500 series flanges

1-1/2" thru 3" 2500 series flanges

Kit Includes 2 ea. Pelican Hard Shell Cases; FOB: Houston, Texas

SMP-VOC 1-2 Kit

VOC 1-2 Kit has bolt hole pins from 3/4" thru 1-3/8" (Handles all flange sizes and series listed)

Kit Includes 3 ea. Pelican Hard Shelled Cases; FOB: Houston, Texas

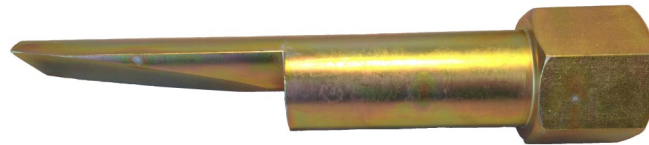
VOC Kits include flange spreading plates to service flange sizes listed, plus interchangeable bolt-hole pins, plus spacer parts 1-3/4" caps (2), 1-3/4" cups (2), 2" spacers (4), 4" spacers (2). Spacer parts total 11.5" per side of flange. Tools come in two Pelican Hard Shell Cases with form fitting foam.

Valve or Meter Wider than 14"?

Extra Spacer Bars are available

- SPCR-2 2" Spacer
- SPCR-4 4" Spacer
- SPCR-6 6" Spacer

TITAN Flange Alignment Tool

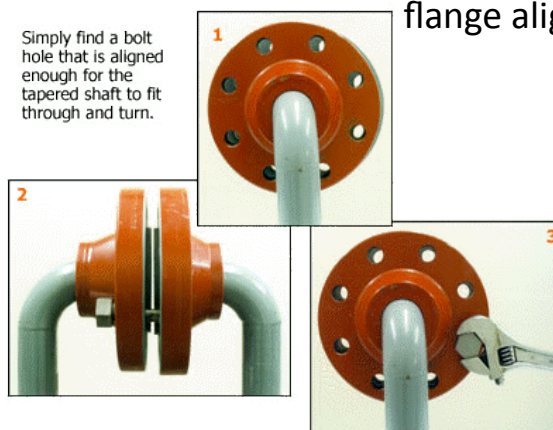


TITAN flange tools are safe, fast, and effective. The tool's tapered shaft is a patented feature that eliminates the need for hammering and prying when lining up flange bolt holes.

TITAN flange aligning tools are sold individually and in sets. Sizes range from 3/8" hole diameter to 3-5/8" hole diameter



TITAN is the only flange alignment tool on the market that compensates for up and down, as well as rotational misalignment. Its simplicity makes it the most affordable flange alignment tool on the market!



TITAN Flange Alignment Tool Spec Sheet

| CATALOG NUMBER | BOLT HOLE SIZE | LENGTH | WEIGHT |
|-----------------------|-----------------------|---------------|---------------|
| SMP-FT0 | 1/2" | 2-3/8" | 2.25 OZS. |
| SMP-FT01 | 5/8" | 2-3/4" | 4 OZS. |
| SMP-FT02 | 3/4" | 3-1/4" | 7 OZS. |
| SMP-FT03 | 7/8" | 3-1/2" | 11 OZS |
| SMP-FT04 | 1" | 4" | 1 LB. |
| SMP-FT06 | 1-1/8" | 5" | 1-1/2 LBS |
| SMP-FT08 | 1-1/4" | 5-1/2" | 2 LBS |
| SMP-FT1012 | 1-3/8" | 6-1/4" | 2-7/8 LBS |
| SMP-FT14 | 1-1/2" | 6-1/2" | 3-1/4 LBS |
| SMP-FT16 | 1-5/8" | 7-1/4" | 4-1/8 LBS |
| SMP-FT1820 | 1-3/4" | 7-7/8" | 4-3/4 LBS |
| SMP-FT22 | 1-7/8" | 8-3/8" | 7 LBS |
| SMP-FT2426 | 2" | 9" | 6-5/8 LBS |
| SMP-FT30 | 2-1/8" | 12" | 10-3/8 LBS |
| SMP-FT34 | 2-3/8" | 13-1/4" | 13-1/8 LBS |
| SMP-FT3642 | 2-5/8" | 14" | 16-7/8 LBS |
| SMP-FT48 | 2-7/8" | 13-5/8" | 24-3/8 LBS |
| SMP-FT5054 | 3-1/8" | 18" | 35-7/8 LBS |
| SMP-FT60 | 3-5/8" | 20" | 54-7/8 LBS |

TITAN Flange Aligning Tool Sets with Case

| CAT # | 2 OF EACH SIZE | WEIGHT |
|--------------|---|---------------|
| SMP-FTS24 | 3/4", 7/8" & 1" | 8 LBS |
| SMP-FTS26 | 3/4", 7/8", 1", & 1-1/8" | 11 LBS |
| SMP-FTS28 | 3/4", 7/8", 1", 1-1/8, & 1-1/4" | 15 LBS |
| SMP-FTS212 | 3/4", 7/8", 1", 1-1/8, 1-1/4", & 1-3/8" | 21 LBS |
| SMP-FTS1426 | 1-1/2", 1-5/8", 1-3/4", 2" | 24 LBS |

TITAN Extra Long Flange Alignment Tool Price

| Catalog No. | Bolt Hole Size (in.) | Tool Length (in.) | Weight |
|--------------|----------------------|-------------------|------------|
| SMP-FT0L | 1/2" | 5-3/8" | 10oz |
| SMP-FT01L | 5/8" | 5-3/4" | 12 ozs. |
| SMP-FT02L | 3/4" | 6-1/4" | 14 ozs. |
| SMP-FT03L | 7/8" | 6-1/2" | 1-1/8 lbs. |
| SMP-FT04L | 1" | 7" | 1-1/2 lbs. |
| SMP-FT06L | 1-1/8" | 8" | 2-1/4 lbs. |
| SMP-FT08L | 1-1/4" | 8-1/2" | 3 lbs. |
| SMP-FT1012L | 1-3/8" | 9-1/4" | 4 lbs. |
| SMP-FT14L | 1-1/2" | 9-1/2" | 4-1/2 lbs. |
| SMP-FT16L | 1-5/8" | 10-1/4" | 5-3/4 lbs. |
| SMP-FT1820L | 1-3/4" | 10-7/8" | 6-1/4 lbs. |
| SMP-FT2426L | 2" | 12" | 7-1/2 lbs. |
| SMP-FT 30L | 2-1/8" | 15" | 13lbs. |
| SMP-FT34L | 2-3/8" | 16-1/4" | 15 lbs. |
| SMP-FT 3642L | 2-5/8" | 17" | 18 lbs. |

Extra Long TITAN Flange Aligning Tool Sets with Case

| <u>CAT #</u> | <u>2 OF EACH SIZE</u> | <u>WEIGHT</u> |
|--------------|---------------------------------|---------------|
| SMP-FTS24L | 3/4", 7/8" & 1" | 8 LBS |
| SMP-FTS26L | 3/4", 7/8", 1", & 1-1/8" | 11 LBS |
| SMP-FTS28L | 3/4", 7/8", 1", 1-1/8, & 1-1/4" | 15 LBS |
| SMP-FTS212L | 3/4"-1-3/8" | 34 LBS |

LOKRITE Backup Tools



- Hands Free
- Magnetic
- “Pinch Point” Free
- Tension Release Bolt



Great for non-sparking areas

Can be used for breakout

New open ended wrench design

Hammers are not needed for removal!



SMP LOKRITE 8 Piece Set with Case

Lanyards can be installed for fall protection

Available in Sizes from 1 1/4” - 6 1/8”

Available in metric sizes as well

SMP LOKRITE 8 Piece Set with Case

1-1/4” - 2-9/16” Box end Wrenches

LOKRITE Backup Tools

Box End Wrench - Sizing and Load Rating Chart

| Part # | Nut Size | Load Limit (in ftlbs) |
|--------------|----------|-----------------------|
| SMP-LR 114 | 1-1/4" | 2320 |
| SMP-LR 1716 | 1-7/16" | 2486 |
| SMP-LR 158 | 1-5/8" | 3480 |
| SMP-LR 1316 | 1-13/16" | 3500 |
| SMP-LR 2 | 2" | 4030 |
| SMP-LR 2316 | 2-3/16" | 4200 |
| SMP-LR 238 | 2-3/8" | 4250 |
| SMP-LR 2916 | 2-9/16" | 4530 |
| SMP-LR 234 | 2-3/4" | 5525 |
| SMP-LR 21516 | 2-15/16" | 6240 |
| SMP-LR 318 | 3-1/8" | 7016 |
| SMP-LR 312 | 3-1/2" | 7150 |
| SMP-LR 378 | 3-7/8" | 8780 |
| SMP-LR 414 | 4-1/4" | 23706 |
| SMP-LR 458 | 4-5/8" | 26891 |
| SMP-LR 5 | 5" | 26900 |
| SMP-LR 538 | 5-3/8" | 26900 |
| SMP-LR 534 | 5-3/4" | 26900 |

Open End Wrench with safety cleat - sizing, capacity, and pricing chart

| Part # | Nut Size | Load Limit (in ftlbs) |
|----------------|----------|-----------------------|
| SMP-LROE 114 | 1-1/4" | 1624 |
| SMP-LROE 1716 | 1-7/16" | 1740 |
| SMP-LROE 158 | 1-5/8" | 2436 |
| SMP-LROE 1316 | 1-13/16" | 2450 |
| SMP-LROE 2 | 2" | 2821 |
| SMP-LROE 2316 | 2-3/16" | 2940 |
| SMP-LROE 238 | 2-3/8" | 2975 |
| SMP-LROE 2916 | 2-9/16" | 3171 |
| SMP-LROE 234 | 2-3/4" | 3867 |
| SMP-LROE 21516 | 2-15/16" | 4368 |
| SMP-LROE 318 | 3-1/8" | 4900 |
| SMP-LROE 312 | 3-1/2" | 5000 |
| SMP-LROE 378 | 3-7/8" | 6140 |
| SMP-LROE 414 | 4-1/4" | 16500 |
| SMP-LROE 458 | 4-5/8" | 18800 |
| SMP-LROE 5 | 5" | 18800 |
| SMP-LROE 538 | 5-3/8" | 18800 |
| SMP-LROE 534 | 5-3/4" | 18800 |

The PIPER Backup Tool



The
PIPER
Backup Tool



8 Piece Piper Backup Tool Kit

A ONE MAN CREW CAN WORK LIKE TWO!!!!

Now you don't need an operator to hold a back-up wrench.

Works well in limited spaces!

Just place the PIPER on the back side of the flange nut that's being tightened. A ball detent holds the PIPER onto the nut and flange. After the nut you are tightening is fully tightened, tap the Piper off of the nut and move to the next one.



The PIPER Backup Tool

| <u>Part #</u> | <u>Nut Size</u> |
|---------------|-----------------|
| SMP-78 | 7/8" |
| SMP-1116 | 1-1/16" |
| SMP-114 | 1-1/4" |
| SMP-1716 | 1-7/16" |
| SMP-158 | 1-5/8" |
| SMP-11316 | 1-13/16" |
| SMP-02 | 2" |
| SMP-2316 | 2-3/16" |
| SMP-238 | 2-3/8" |
| SMP-2916 | 2-9/16" |
| SMP-234 | 2-3/4" |
| SMP-21516 | 2-15/16" |
| SMP-318 | 3-1/8" |
| SMP-350 | 3-1/2" |
| SMP-378 | 3-7/8" |
| SMP-414 | 4-1/4" |
| SMP-458 | 4-5/8" |
| SMP-538 | 5-3/8" |

Piper Backup Tool Sets

| |
|-------------------------------------|
| 3 Piece set (7/8", 1-1/16", 1-1/4") |
| 6 Piece set (7/8" to 1-13/16") |
| 6 Piece set W/ Pelican Case |
| 8 Piece set (7/8" to 2-3/16") |
| 8 Piece set W/ Pelican Case |

FOB: Bellaire, Texas

SMP Piper products are cast from 8620 steel that contains nickel, chrome and molybdenum as alloying elements. The tools have a Rockwell "C" level of 58-62.

SMP Flange Elevators

For lifting weld neck flanges and installing and removing blind flanges.
Each tool is load tested and mag particle inspected.
Never rely on unsafe welded lifting eyes.

SMP - FLA 1000

For lifting weld neck and blind flanges
Adjustable plates fit flanges up to **6^{1/8}" thick**
Rated up to **1000 lbs.**



SMP - FLA 5000

For lifting weld neck and blind flanges
Adjustable plates fit flanges up to **11^{1/8}" thick**
Rated up to **5000 lbs.**



SMP - FLA 112

Arms swing to quickly, safely and easily
install or remove blind flanges
Adjustable plates fit flanges up to **4^{1/2}" thick**
Rated up to **1000 lbs.**



SMP - FLA 212

Arms swing to quickly, safely and easily
install or remove blind flanges
Adjustable plates fit flanges up to **7^{5/8}" thick**
Rated up to **2000 lbs.**



SMP Chock-O-Lot



**CHOCK THEM OPEN WITH
THE
CHOCK-O-LOT!!**

- **Adjustable from 1/8" to 2" of width with 1/8" increments.**
- **Tie-off Ring**
- **Never use a flange spreader to hold open flanges while work is being performed.**
- **Hold them open safely!**
- **Ideal for getting a better bite with the POP-IT HD Tool**

SMP part number: SMP1001

AMS FLOW BOSS - Bleeder Cleaners

AMS FLOW BOSS cleaners allow clogged bleeder, vent and instrument tap valves to be cleaned safely and efficiently while containing process material. These patent pending tools eliminate the hazards of dangerous fires, spills and vapor releases while performing these tasks.

FLOW BOSS is the only safe tool available to clean clogged instrument taps, drain valves, manifolds and orifice taps. Never again use a welding rod, screwdriver or any other dangerous contraption that lacks a pressure gauge or vent valve to rod out valves and taps.



Straight



Angle 90



Angle 60



****ASK ABOUT OUR INDESTRUCTIBLE DRILL BITS****

AMS FLOWBOSS Bleeder Cleaners are high quality tools that can be used over and over. Repair kits are available for these tools essentially making them a one time purchase. Cheap imitation rod out tools can be dangerous, so stop throwing your money in the trash. Specialty Maintenance Products offers training and onsite demonstrations, tool inspection and repair, and the sales service to ensure that your team has the right tool and the knowledge and skills to work safely.

SAFE ROLL

A Revolution In Equipment Flange Removal™

If your davit post is not in good working condition, the tool you have been looking for is here!!!

SAFE ROLL!!!!

SAFE ROLL is a portable davit system!!

- Safe Roll does not require a crane to install
 - Saves davit inspection and repair
 - Conveniently stored in your tool room
- Most importantly...**IT IS SAFE!!**

Tested to 10,000 LBS ~ Will Safely Roll & Lift 2 Tons ~

Light weight App. (15 lbs.)
Roll & remove manways

24" 150lb

24" 300lb

20" 300lb

***Can be used over & over!!**
The Safe Roll bracket will fit many sizes of flanges.



Part # SMP - SR2024



(Chainfall not included)

Save \$\$\$ on your next maintenance project

Part # SMP - SR 2024

To include: Portable davit arm
Manway bracket
3 sets of expandable collets to fit:
24" 150lb, 24" 300lb, and 20" 300lb
Comes with Pelican case

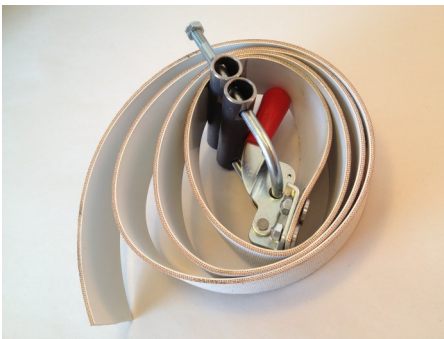
SMP Flange Belts

It must always be assumed that when you break flanges open, gas or chemical spray can spurt out onto your work crew. Your worker is in direct line of fire when breaking the flange bolts. Proper PPE is a must, but might not be enough protection if a crew member is exposed to chemical spray. Deflecting the spray out through the bolt holes of the flanges ensures the ultimate protection from chemical spray exposure.

Introducing the SMP Spray Deflecting Flange Belt! The safest way to prevent chemical spray exposure is to make sure that the spray is deflected away from the worker.

Simply loop the flange belt around the flange and engage the cam over latch to prevent:

- Chemical exposure
- Hot liquid spray
- Gas burns



Fits easily into a work bucket



Available in 2 sizes:

SMP FD1 Spray Deflector Belt fits flanges with pipe OD up to 22 inches

SMP FD2 Spray Deflector Belt fits flanges with pipe OD 22 to 45 inches

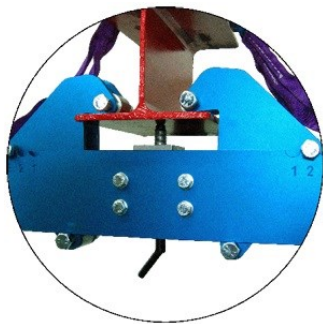
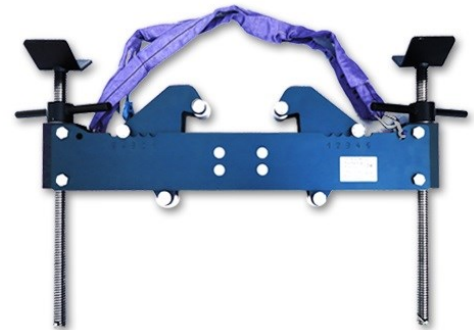
Now featuring a flange access gap to allow operator to use a pop-it tool or a pry bar to break the seal between flanges.

Line break safety is a cinch with SMP Flange Belts

Pipe Rack Jack

Designed by B&R Engineering, the **PIPE RACK JACK** is developed to lift pipe for inspection or to replace and refurbish supports underneath pipe.

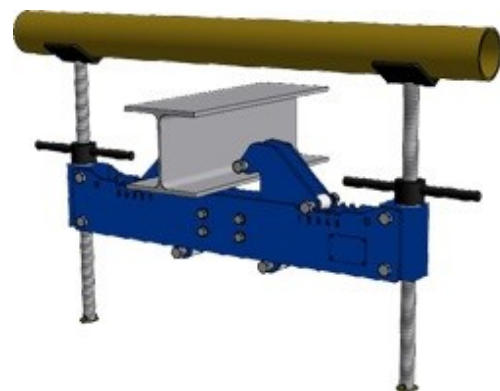
- The **PIPE RACK JACK** eliminates the need to hire an expensive crane or build scaffolding to inspect your pipes.
- Now yearly pipe maintenance can be performed Cheaper, Faster and most importantly Safer.



Pictured Left: This picture illustrates the central support, one of many optional **PIPE RACK JACK** attachments. This accessory allows you to maintain stability with unevenly distributed weight. Call for more details to help you get the most out of your **PIPE RACK JACK**.

Technical Specifications

- Base material: anodized high tensile aluminum
- Pipe diameter: up to DN400 (16")
- Beam height: 4"-12.5"
- Beam width: 4"-12.5"
- Maximum load: 5500 lbs.
- Lifting height: minimum 6"
- Main body weight: 37 lbs.; Total weight: 54 lbs.
- Dimensions: 36" x 11" x 4.5"



- The **PIPE RACK JACK** takes **1 minute** to install and can lift pipe in only **40 seconds**.
- The **PIPE RACK JACK** is a Simple, Safe, Solid, Cost Effective, CE Approved, Corrosion Resistant, and Purely Mechanical Solution to an expensive problem.
- Available for purchase or rent

Part # - SMP PRJ (includes Pelican case)

The BobbyJack Pipe Lift *Patent Pending



Corrosion at Pipe Support



Quick and Easy Installation

BobbyJack Pipe Lifts, LLC

www.thebobbyjack.com

For Sales & Information call
Specialty Maintenance Products

(713) 667-4402
info@SMPtools.com

The BobbyJack is a patent-pending, cost-saving industrial device designed to raise pipes in pipe rack systems to allow for maintenance, inspection, and other activities which require lifting the pipes from the supporting beams.

Reduce Costs. Maximize productivity. Increase Safety.

- Eliminates need for Crane, Crane Operator, & Rigger
- Quick & Easy Installation – Less than 1 minute
- One Person Installation – Heaviest Component weights 43 lbs.
- Accommodates Pipe Sizes up to 30 Inches
- Raises Pipes up to 5 3/4" from Beam
- Fits All Standard Size Beams

Each Unit Tested & Certified to withstand >12,000 lb. Load

Part# – SMP Bobby Jack